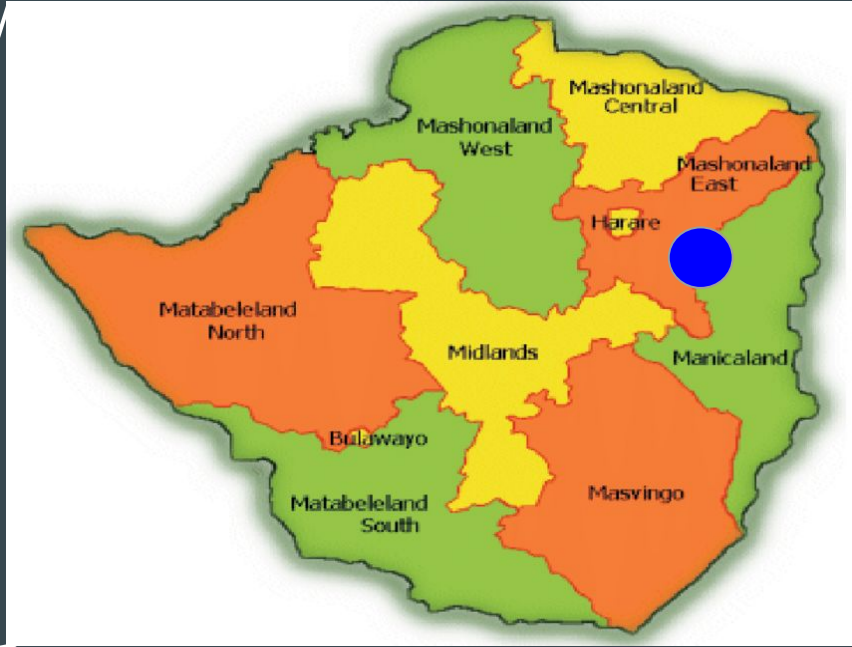


Zimbabwe

The Mudiwa School



Africa



Why Zimbabwe?

Zimbabwe Facts

- 49% extreme poverty in 2020 (average pay is less than \$1.90 a day)
- 52.7% have access to electricity as of 2020
- 29% have access to the internet
- 59.3 years of age is the average life expectancy



What are we doing?

Zambezi Fresh Produce

- 2000 Acres
- Blueberries (210 acres)
- Garden Variety Vegetables (200 acres)
- Approx. 350 Employees (600 by July 2025)
- Small Mercantile Shop
- Medical Clinic
- Crèche



Aerial view of Zambezi Fresh blueberries



Clockwise: Weighing and packaging blueberries, harvesting cabbage, packaging onions, loading beans, blueberries on plant



Children at the crèche

Zimbabwe Educational System

- There are approximately 6.6 million children aged 3-18 in Zimbabwe.
- Thabela, the Secretary of Ministry of Education, said the country is facing a deficit of 3,000 schools, while thousands of learners were acquiring education at inferior schools.
- The Ministry of Education admits they “cannot do it alone”.



News Day, “Govt. sends SOS on Education” by
Miriam Magwaya, Jan. 26, 2023

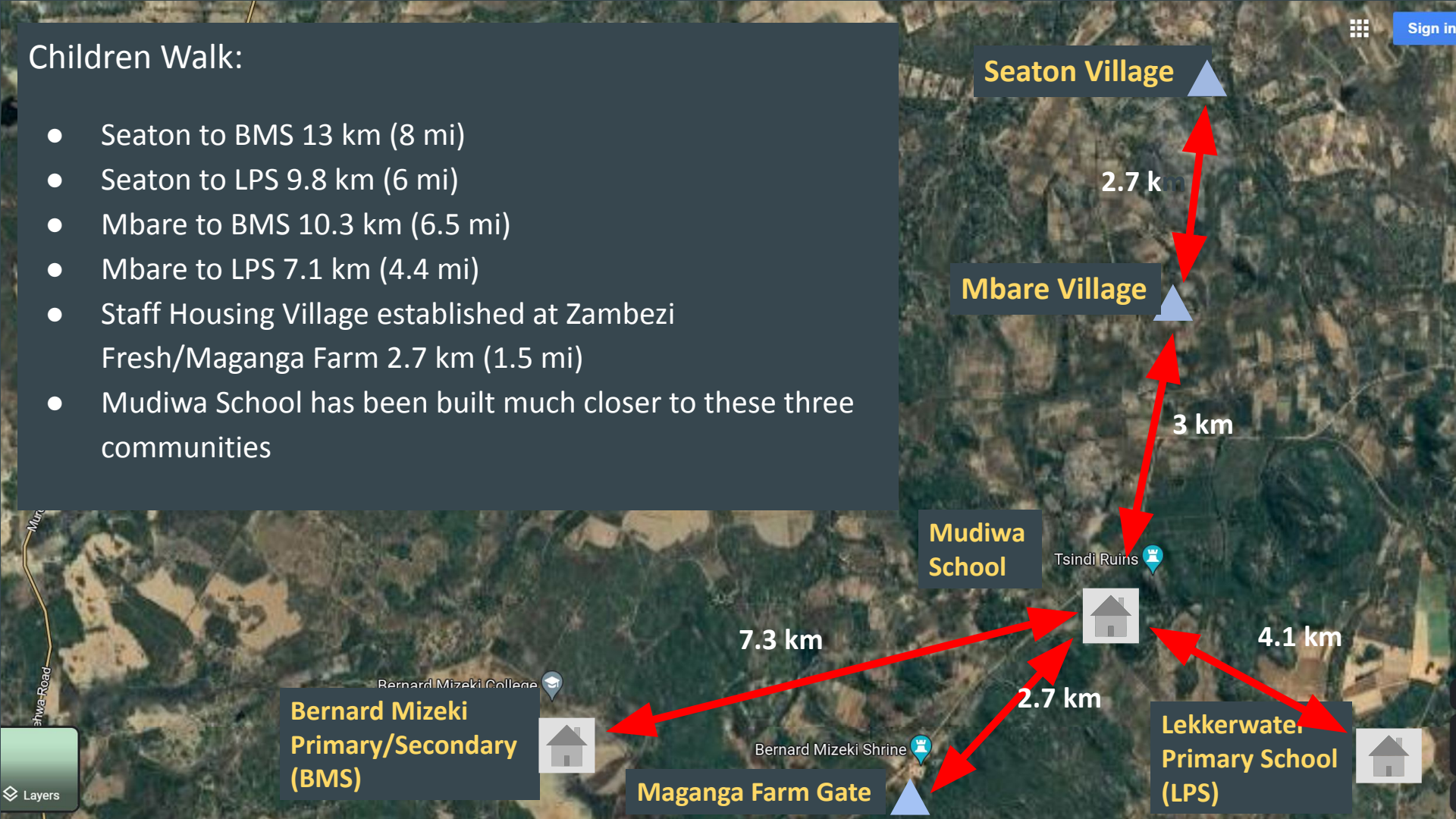


Problems with the surrounding schools:

- Too expensive
- Too far to walk
- Poorly maintained
- Hot Seating - Children only attend half a day to allow more children to attend

Children Walk:

- Seaton to BMS 13 km (8 mi)
- Seaton to LPS 9.8 km (6 mi)
- Mbare to BMS 10.3 km (6.5 mi)
- Mbare to LPS 7.1 km (4.4 mi)
- Staff Housing Village established at Zambezi Fresh/Maganga Farm 2.7 km (1.5 mi)
- Mudiwa School has been built much closer to these three communities



Mudiwa School Goals

- Improve lives, build hope and develop bright futures through quality educational opportunities
- Reduce walking distance of school by >50%
- Increase the level of education within neighboring communities by offering online courses to adults
- Facilitate volunteers to teach skills and foster a higher standard of living in these communities

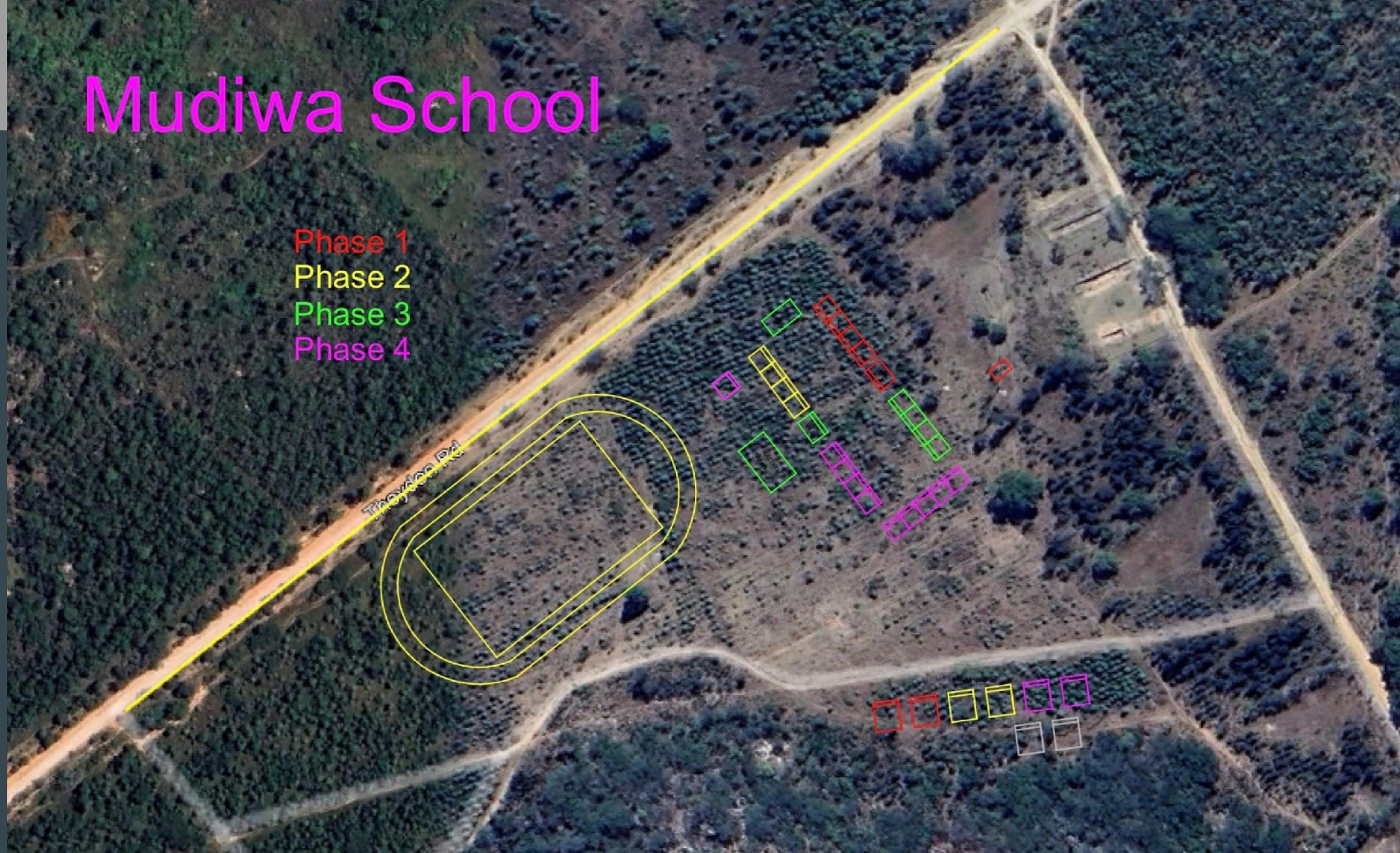
Mudiwa School

Phase 1

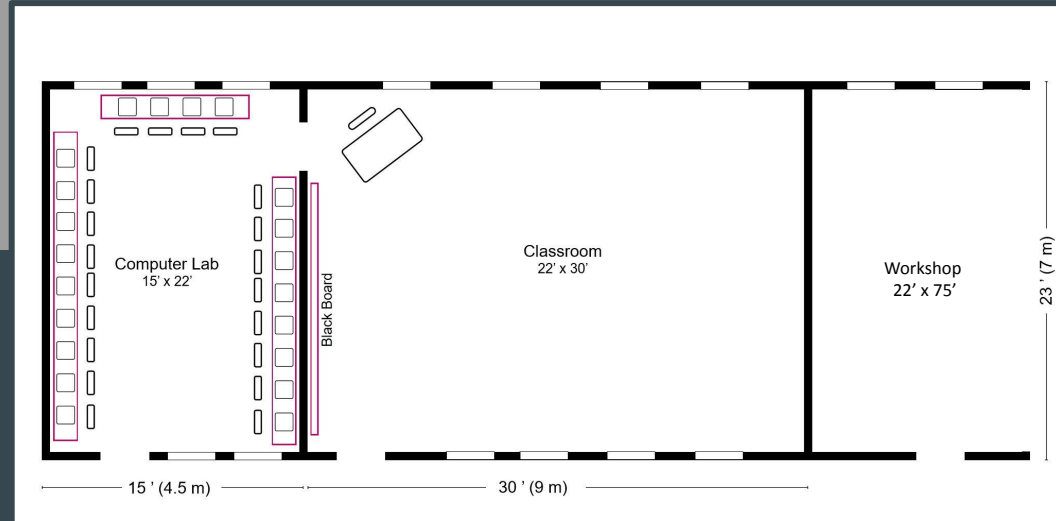
Phase 2

Phase 3

Phase 4



Adult Training Center



- Training and certification in trade work
- Access to BYUpathway.org, a low cost online degree program
- Live instruction by skilled tradesman free of charge

Plumbing ♦ Electrical
Cooking ♦ Sewing
Welding ♦ Mechanics
Construction
Self-Reliance

Building Phases

*Each phase is based on
funding availability*

Phase 1 - \$270,000 - Completed

Clear Land, Fencing, Water (Bore Hole), Power, Four Classrooms, Restroom Block and Staff Housing (2 Duplexes)

NOTE: Staff Housing is essential to attract qualified, exceptional teachers to the school.



View of Mudiwa School Property



L to R: Building bricks on site, bricks drying and building the pump house



L to R: Classroom and Restroom Block
and Housing Duplexes



5th and 6th Grade
Classroom



Clockwise: Children receiving lunch, 3rd & 4th Grade in Class, School Children

Building Phases

Phase 2 (Yellow) - \$165,000

Classrooms (80k), Housing (70k) and Field (15k)

Phase 3 (Green) - \$260,000

Classrooms (80k), Toilets (35k), Admin. (35k) and Kitchen/Dining Hall (110k)

Phase 4 (Magenta) - \$290,000

Classrooms (180k), Housing (70k) and Adult Learning Center (40k)



How Can You Help?

Donate to complete the outlined building phases of the Mudiwa School. Future donating opportunities will include sponsoring teachers and students.

Donate directly with link:

[PayPal.com/us/fundraiser/charity/2409297](https://www.paypal.com/us/fundraiser/charity/2409297)



Thank you for your support!

- At this time, all donations go towards building the school. There are no administrative or overhead costs associated with our foundation.
- To **donate** or **learn** more about our foundation's past and present charity work visit:

<https://www.azimbabweschool.org/>

- Any questions contact:

zimschoolproject@gmail.com